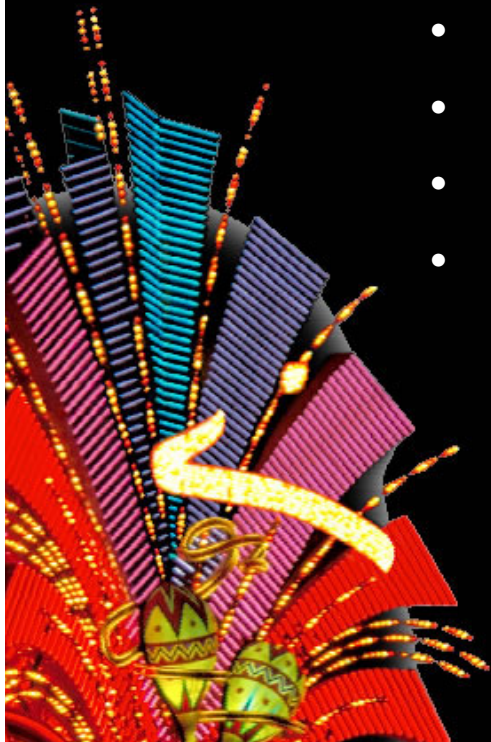


# 4C AnySite Tips and Tricks

- Wednesday May 21, 2008
- 2:50pm – 4:00pm
- Steve VanEarden
- Pitney Bowes



**MapWorld<sup>08</sup>**  
**LIVE IN LAS VEGAS**

**G1** customer conference **08**  
**LIVE IN LAS VEGAS**

# Tips, Tricks, things to be aware of.

- Tips
  - AnySite.mdb.
  - Art Files. **(New Info)**
  - Individual Styles.(New Info)
  - Naming layers in AnySite.
  - Reporting. **(New Info)**
  - Default view setting in INI.
  - Tools >> Update Preferences **(New Info)**
- Tricks
  - Saving layers to tables with AnySite.
  - Labeling within AnySite.
  - Creating a non-layer map preference.
  - Server layer default map of whole area.
  - Finding closest.
  - Anysite.ini.**(New Info)**
- Things to be Aware of.
  - Creating map preferences with different layers.
  - Creating multiple “users” when working within AnySite.
  - F5 – refresh of the map.
  - Resetting a user.
  - ACT files. **(New Info)**
  - Installer change. **(New Info)**





# Tips

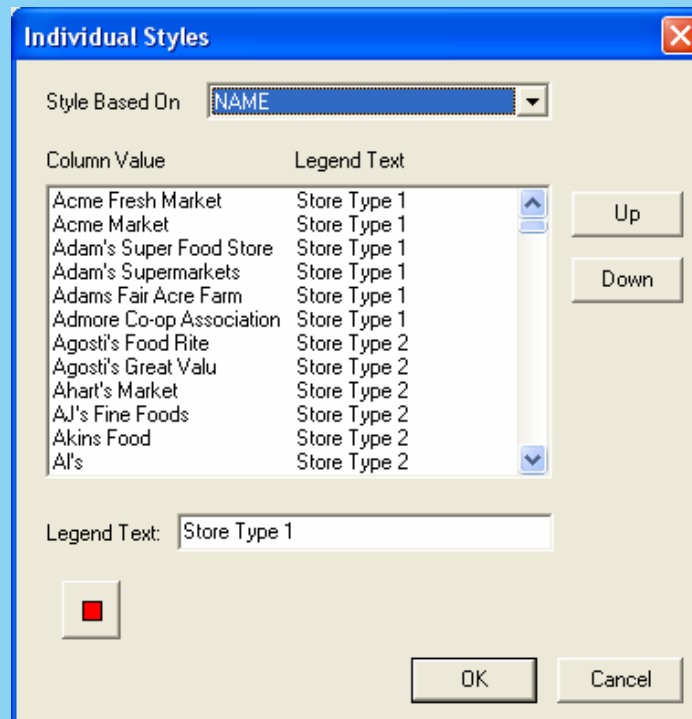
# Tips for AnySite Users (1)

- The AnySite.MDB file.
  - The control database for entire AnySite application.
    - Make a backup copy prior to systemic changes to your machine.
- Art Files.
  - Use Tools > Export Preferences to create art files.
  - Use Tools > Import Preferences to import art files.
  - Saves reports, hotspots, map preferences, and thematics.
  - Makes reports transportable to other systems.
  - Helpful as a backup of system level information.



## Tips for AnySite Users (2)

- Individual Styles. (**New Info**)
  - Set style of object for layer based on contents in the field.
  - Changes made will be reflected on the map.
  - Really cool with server data.
  - Legend will only show objects within map view.
  - **New Feature:** Values can now be grouped together.







# Tips for AnySite Users (5)

- Naming layers in AnySite.
  - Layers with the same legend name will be treated as one layer within AnySite.
  - Multi display settings for same layers while incorporating zoom-layering.





# Tricks for AnySite User (1)

- Saving layers to tables with AnySite.
  - Go to File > Save Layer.
  - Dialog will let you save any system layer to New or Current MapInfo table.
  - Objects saved to existing layers will appear in the map layer.
  - Tables can be modified in Configurator.
    - Go to Tools > Modify MapInfo table.





## Tricks for AnySite Users. (3)

- Creating a non-layer map preference.
  - Set up a map preference with no layers.
    - Can use the ocean layer if nervous.
  - Use this preference when doing batch processing where only reports are needed.
- Server layer default map of whole area.
  - Set the default map to the entire U.S.
  - When map initially loads it will retrieve all of the server data.
    - Take the initial hit at load time.
- Find Nearest
  - Use the capture tool with count set to one.



# Tricks for AnySite Users. (4)

## Interesting Parts of the INI.

- [LinkedLayers]

- ;When displaying linked server layers, do you want to filter
- ;out regions that have no corresponding server record?
- ; 0 = never filter unjoined records
- ; 1 = only filter unjoined records when they have parameters
- ; 2 = always filter unjoined records
- FilterOutUnjoinedRecords=0

- [SystemOptions]

- Dealing with Dot Densities

- ; 1 = draw directly to device
- ; 2 = draw to metafile then send to device
- ; 3 = draw to bitmap then send to device
- ;if drawing to bitmap what resolution in pixels do you want?
- LayoutDrawMode=1
- LayoutBitmapResolution=1000



# Tricks for AnySite Users. (4) (new info)

- [Localization]

;For localizing the copyright/contact information on report and map. "\n" can be used for multiple lines but must make sure that templates has enough room for text.

;(If left blank will default to copyrights used for North America.)

;

CopyrightReport=

CopyrightMap=

CopyrightAbout=

CopyrightSplashLine1=

CopyrightSplashLine2=

CopyrightSplashLine3=

TechSupportPhone=

TechSupportEMail=

TechSupportSubject=





# Things to be Aware of as an AnySite User(1)

- Installer has been changed. **(New Info)**
  - Separate license CD shipped with the DVD.
  - Installed after the installation\update of AnySite.
- Creating map preferences with different layers.
  - Different map preferences with unique map styles.
  - Don't use a set map preference in a batch process unless needed.
- Creating multiple “users” when working within AnySite.
  - You can create separate “users” with AnySite security to minimize layer over-load.
  - You can remove all users for an item to avoid deleting.
- **(New Info)** ACT files for MapPreferences will sometimes not work when integrating on a different, usually new, system.
  - Best bet is to copy over the old MDB to the new system.



# Things to be Aware of as an AnySite User(2)

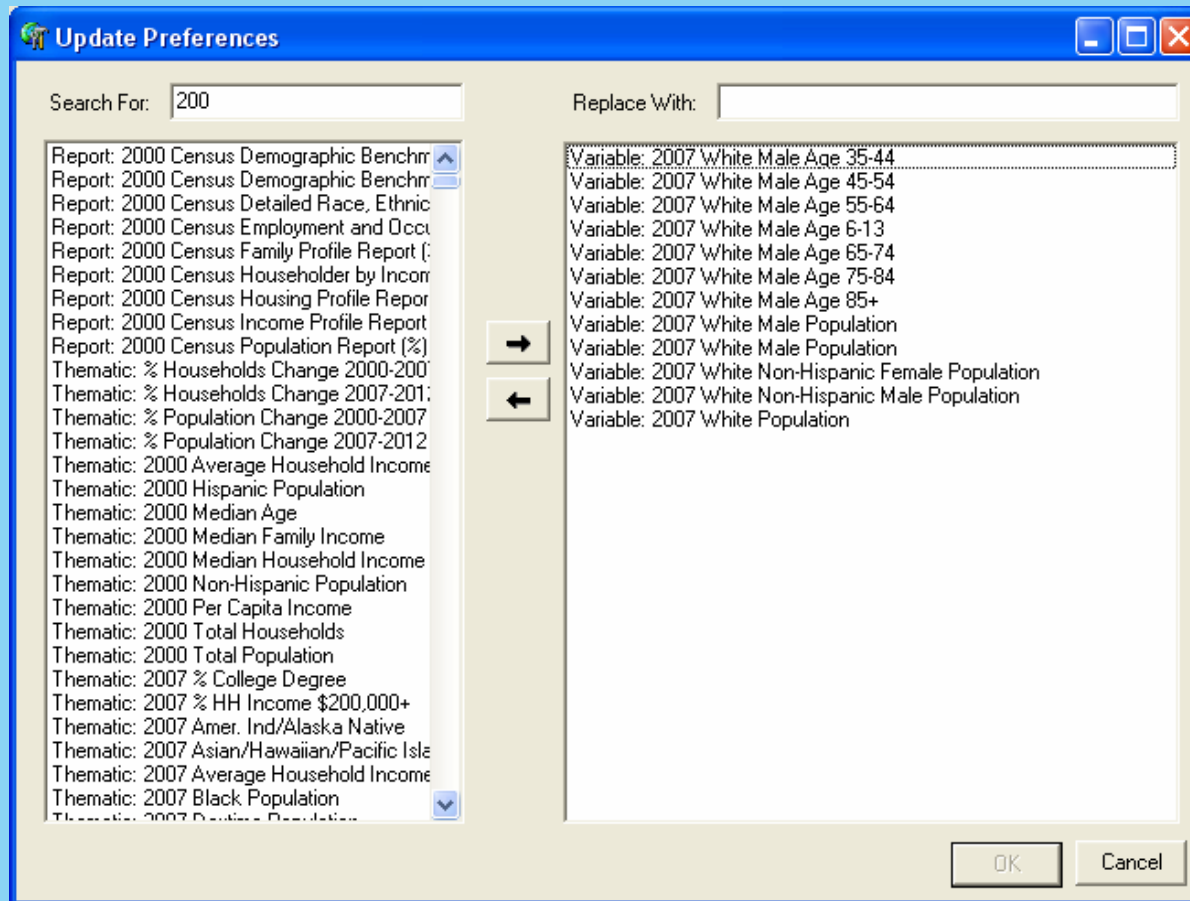
- Map > Refresh.
  - Parameters = reruns the prompt for parameter based layers.
  - Server Layers = reinitiates the download sever level layer data.
  - Layer Preferences = resets layer display settings reading the configurator.
  - Map Preferences = reloads the current map preference.
  - All = does all four refresh functions.
  - F5 = Edit > Preferences > Refresh options sets refresh options used when the F5 key is pressed.





# Update Preferences

- Accessed through configurator.
  - Tools >> Update Preferences.
  - Replaces string values with new.





# Questions and Answers