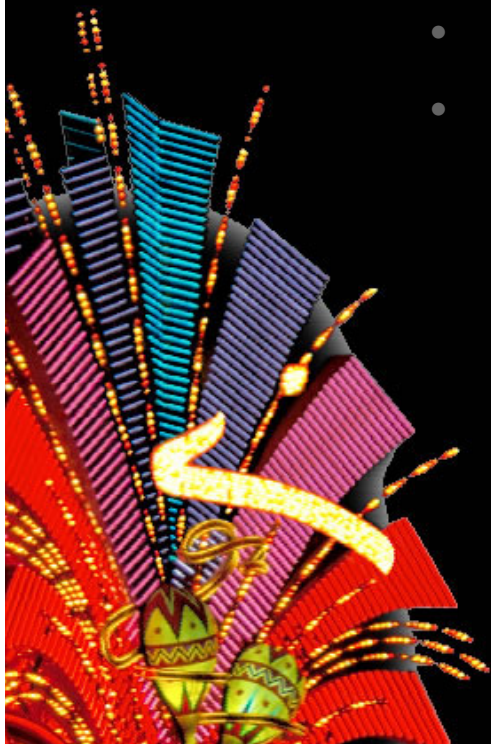


Session 3 – Data Integration (Data Flow 6.5)

- Heidi Geronimo
- Senior Product Analyst



MapWorld⁰⁸
LIVE IN LAS VEGAS

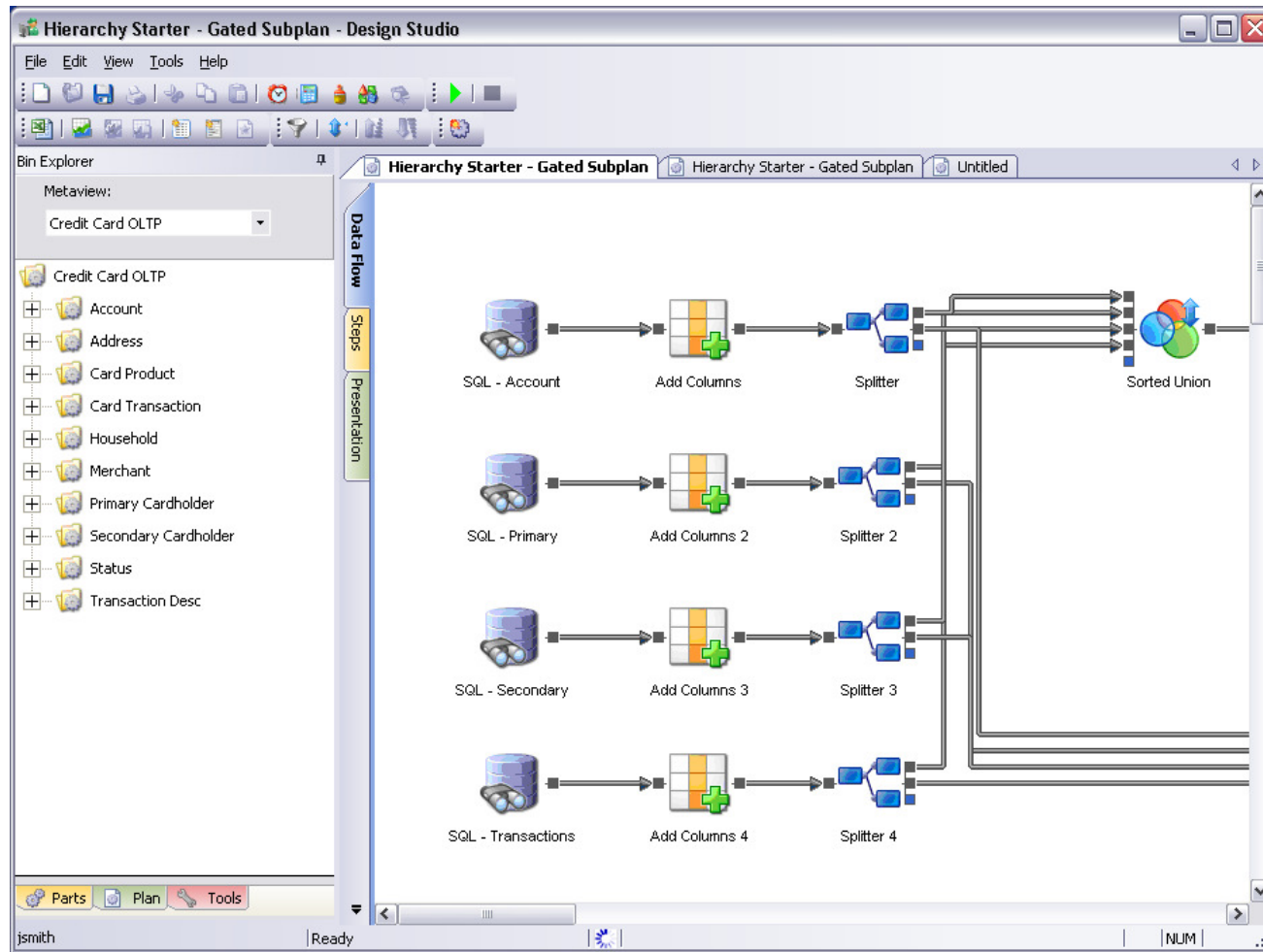
G1 customer conference **08**
LIVE IN LAS VEGAS

Overview

- User Interface Changes
- Usability Improvements
- Data Connectivity Improvements
- Scalability and Manageability Improvements
- Platform Support
- Coming Soon



User Interface Improvements



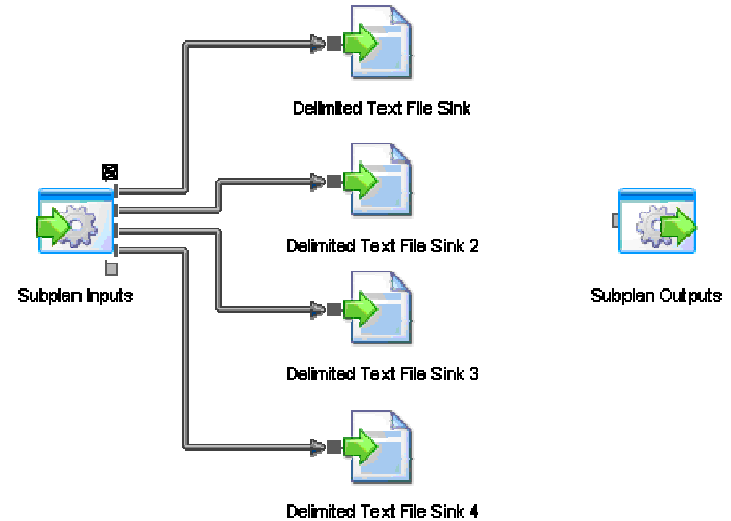


Usability Improvements

Linked SubPlans

Provide the ability to create reusable components.

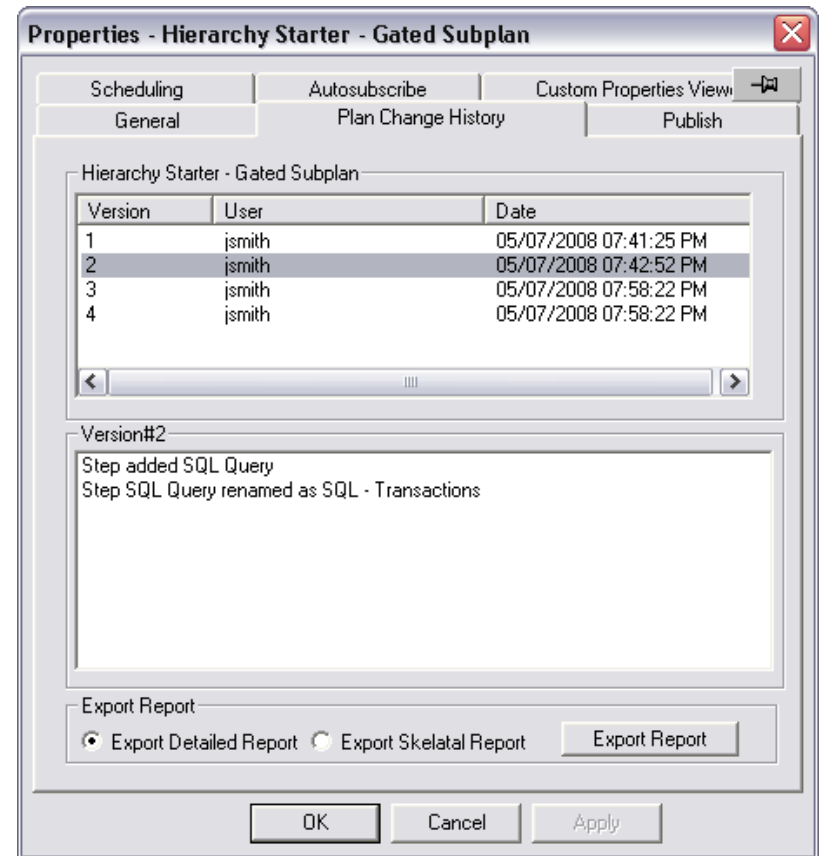
	File Creation Sub Component	Component	5/14/2008
	Test Component	Component	1/29/2008



Usability Improvements

Track Plan Changes

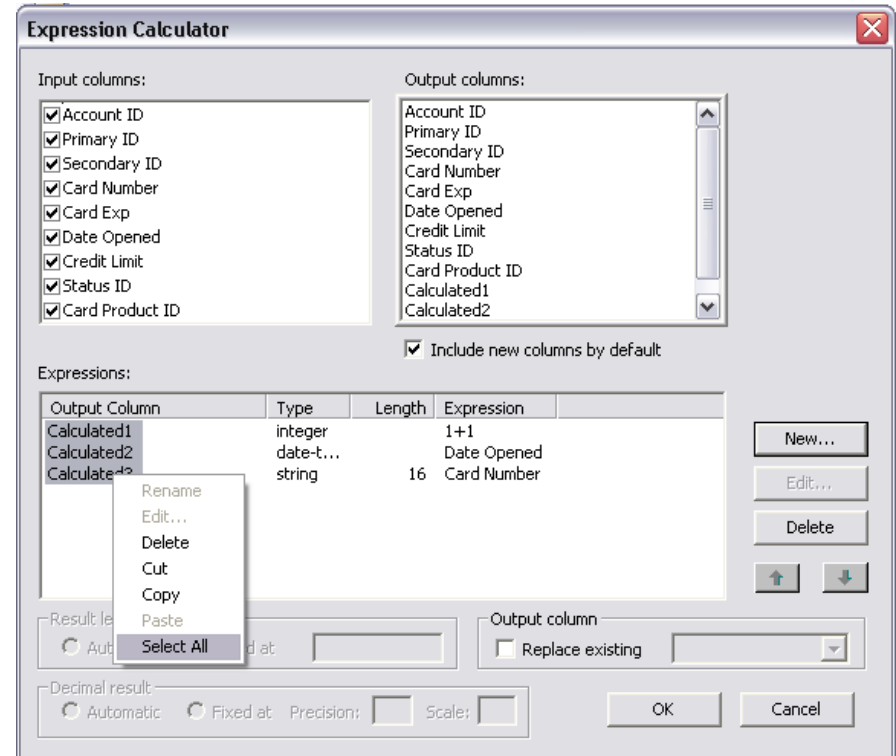
Automatically track changes to plans by user and record the date and nature of the change.



Usability Improvements

Expression Calculator Cut and Paste

Allows you to copy and paste multiple calculations at one time.

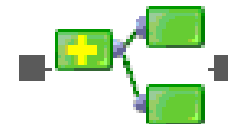




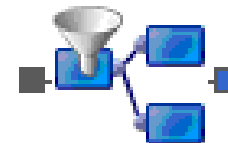
Usability Improvements

New Transforms

Multi-Condition Filter Transform
Filtered Splitter Transform



Multi-Condition Filter



Filtered Splitter

Data Connectivity Improvements

- DB Cluster Support
- AltiBase Support
- Locale Settings in Text File Sources
- Improved Consistency of Data Type Handling
- Documentation of Data Type Handling for All Databases



Scalability and Manageability Improvements

Key Lookup Enhancements

- New Cache Options
- Handles Multiple Return Rows
- < > Support

The screenshot shows the 'Key Lookup' dialog box with the following sections:

- Table lookup:** BaseView, Table, Column (dropdowns)
- Place result in:** New field, Existing field
- Default error value:** (dropdown)
- Lookup column, Result column, Error value:** (table with 3 columns)
- Options:** Cache size (records): 100000, Trim trailing spaces, Match case
- Natural keys:** Input table column, Lookup condition, Lookup table column (dropdowns), Add, Remove buttons
- Subset:** Ignore null keys, Subset Lookup Table, Lookup table column, Lookup, Constant value (dropdowns)
- Execution options:** All matched rows, First matched row, Halt execution
- Caching options:** Cache whole table, Pre-loaded partial cache, Cache as found, Cache the lookup result only.

Scalability and Manageability Improvements

- SARUN – Ability to set DB connect parameters at runtime.
- Automatic Documentation
- Support for Upgrades from 5.0 or higher





Platform Support

- Unicode Support
- X64 Windows Support
- Windows Itanium Support

Coming Soon

- HPUX on Itanium
- Expression Calculator Performance Improvements
- Oh-Pa Integration
- UI Enhancements
- X64 non-Unicode Release
- XML Handling Improvements
- Composite Software – [SalesForce.com](https://www.salesforce.com)

